

How to do your legislative release?

Please make sure that you are on Pastel Payroll & HR 2020 update 1

If not you can follow the link below to download the update.

<https://www.sage.com/za/support/product-support/sage-pastel-payroll/download-latest-software-version>

Sage Pastel Payroll & HR Software Downloads

Overview



If you have any queries on our product updates, please get in touch with our support team:

Tel: +27 11 304 4300

Email: support.pastelpayroll@sage.com

Contact Us >

Latest software release – Sage Pastel Payroll & HR 2020

Do you need assistance with your Pastel Payroll Tax Year End? Click [here](#) to download the guide for assistance.

Latest software release – Sage Pastel Payroll & HR 2020 Update 1

Sage Pastel Payroll has recently released 2020 Update 1 in order to apply the changes presented in the 2019 Budget Speech. We have also included some minor corrections, amended the UI-19 report, increased the OID limit and much more.

[Click here to download the full install.](#)

If this is the first time you are installing Sage Pastel Payroll, you can [click here](#) to download the required prerequisites.

Attention existing customers:

Earn a commission and win R50 000!

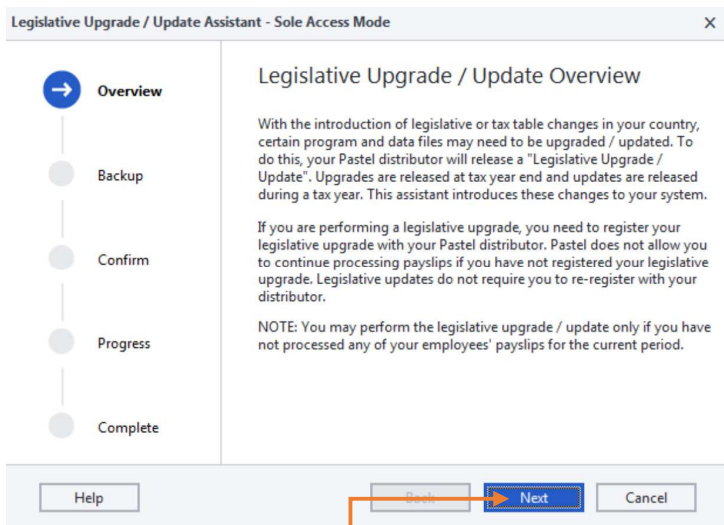
You can earn commission for referring a company that requires a payroll solution to Sage Pastel Payroll & HR. You'll also be entered into the annual draw to win R50 000. [Read more.](#)

Once you are updated to 2020 update 1

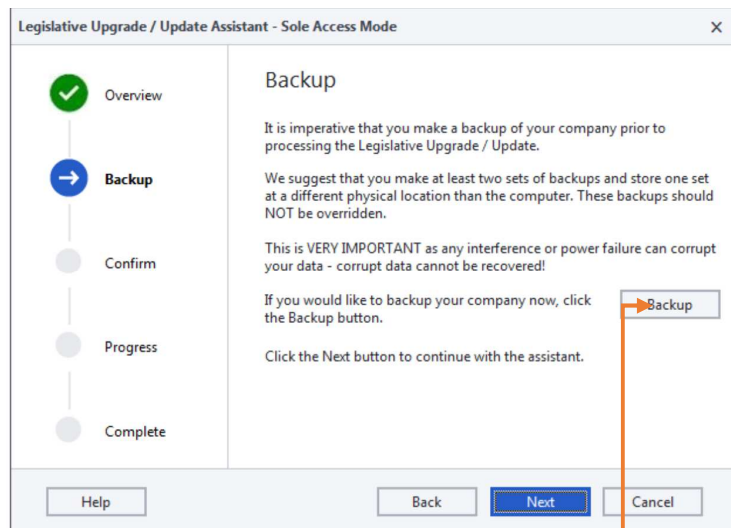
1. Open your company

Please make sure you do not have any processed employees

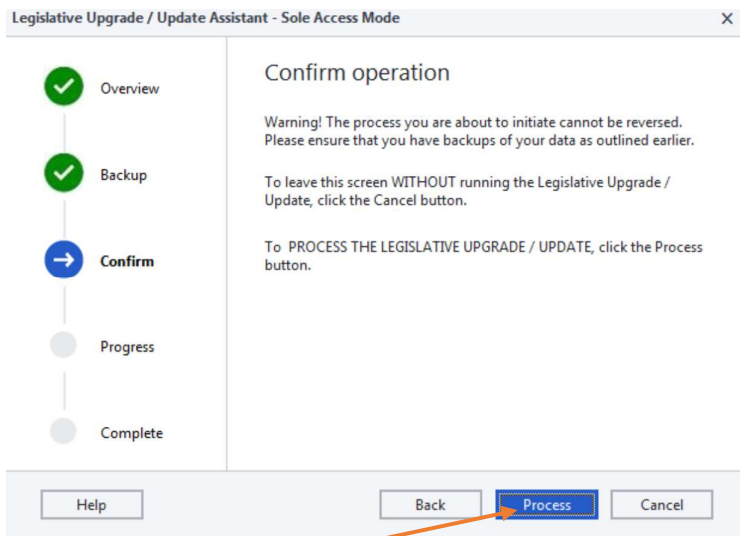
2. Klick on file menu – legislative release (the screen below will appear)



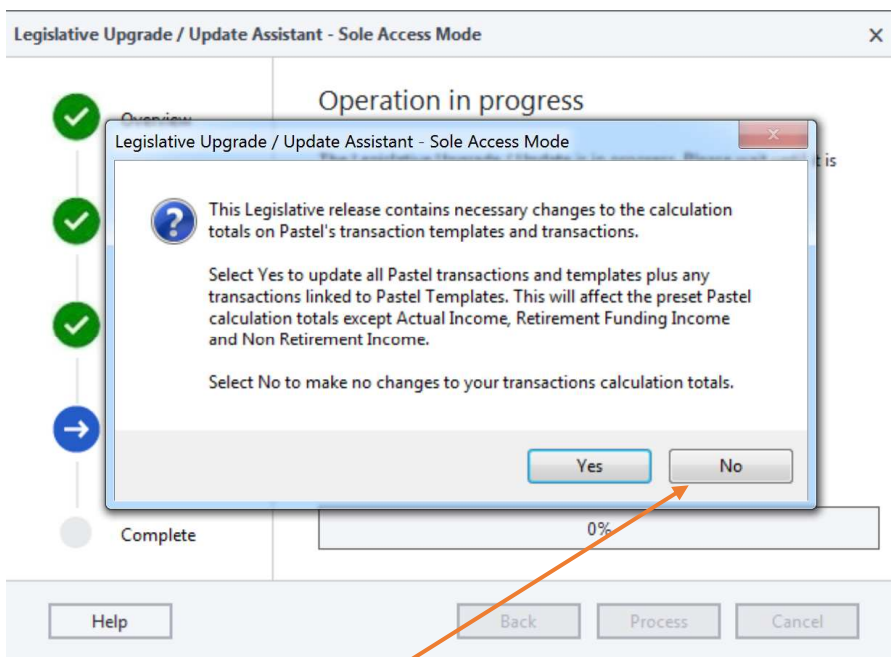
Klick on Next



Please make a backup and only then press next

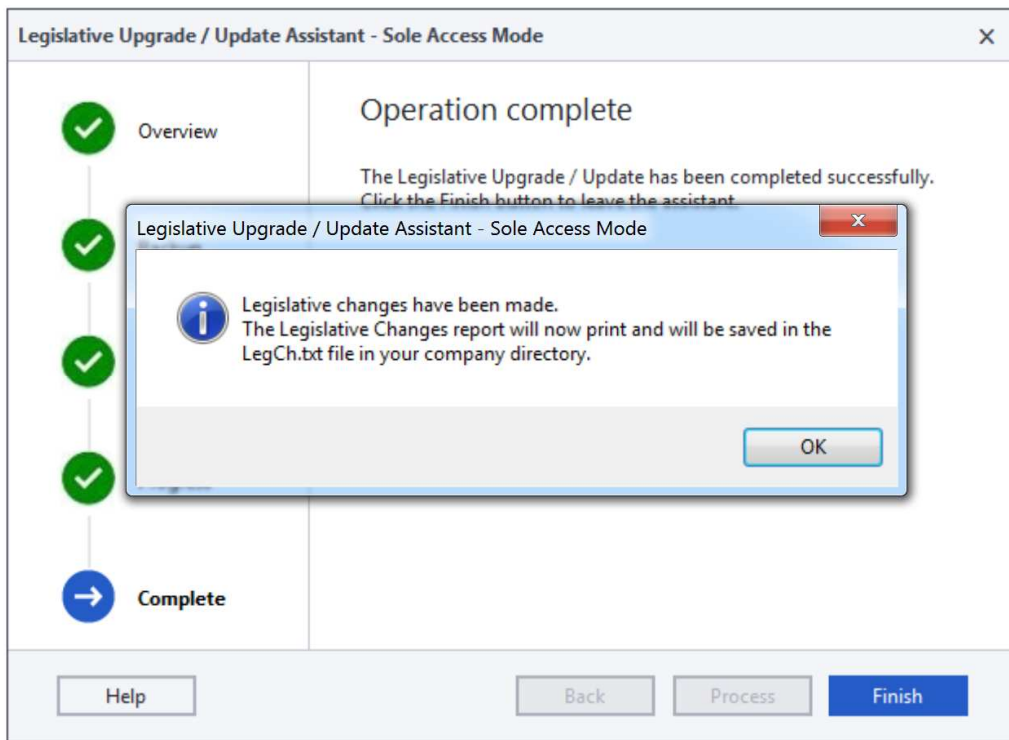


Click on Process

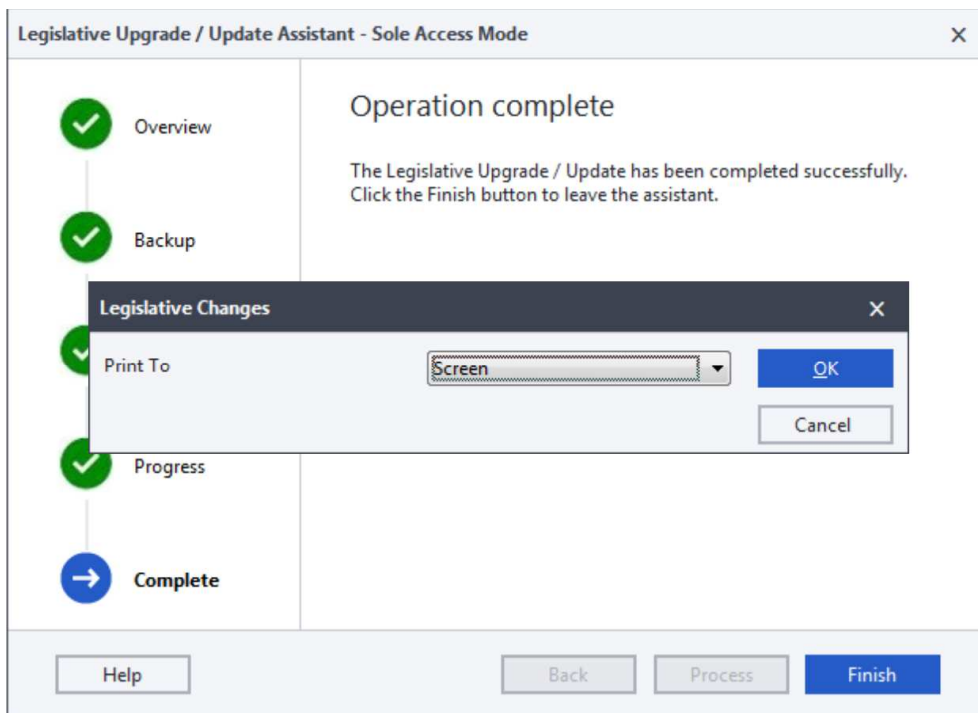


Here you MUST click NO

Once it is done running you can click on OK



When it asks to print you can click on cancel



Click finish and continue with normal processing.

Please feel free to contact us should you need any assistance