

How to download your legislative release.

Please click on the this link <http://payrollupdate.sagesouthafrica.co.za/pastel/>

The following screen will appear

Please click on the countries tab



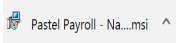
Application Downloads			
Countries			
Sage Products			
Name	Description	Size	Actions
Pastel Payroll 2019 Update 1c	Pastel Payroll 2019 Update 1c	204 MB	DOWNLOAD
Pastel Payroll 2019 Update 1c patch from 2019 Update 1 or higher	Use the patch update if you have Pastel Payroll 2019 Update 1 or higher	1 MB	DOWNLOAD
Pastel Payroll 2019 Update 1a patch from 2018 Update 3	Use the patch update if you have Pastel Payroll 2018 Update 3	10 MB	DOWNLOAD
Sage Insight	Sage Insight	42 MB	DOWNLOAD
Sage Connected Services	Sage Connected Services (2.1.39)	15 MB	DOWNLOAD

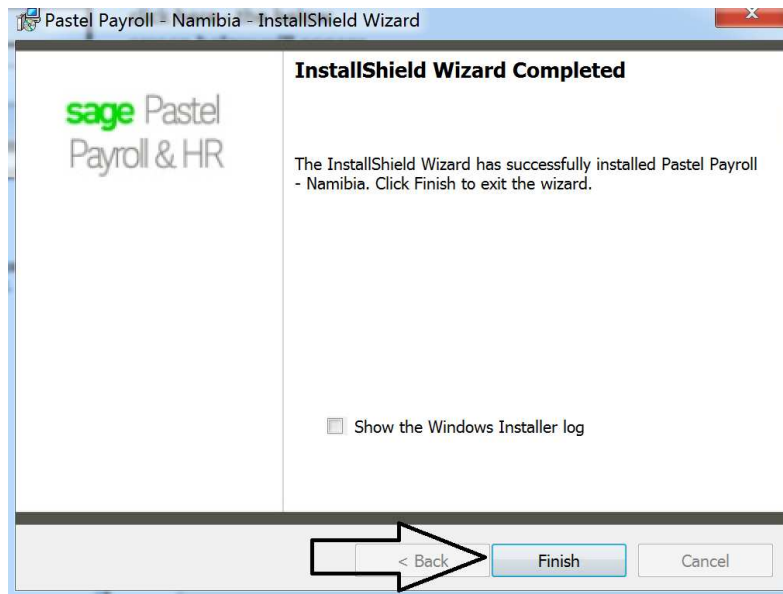
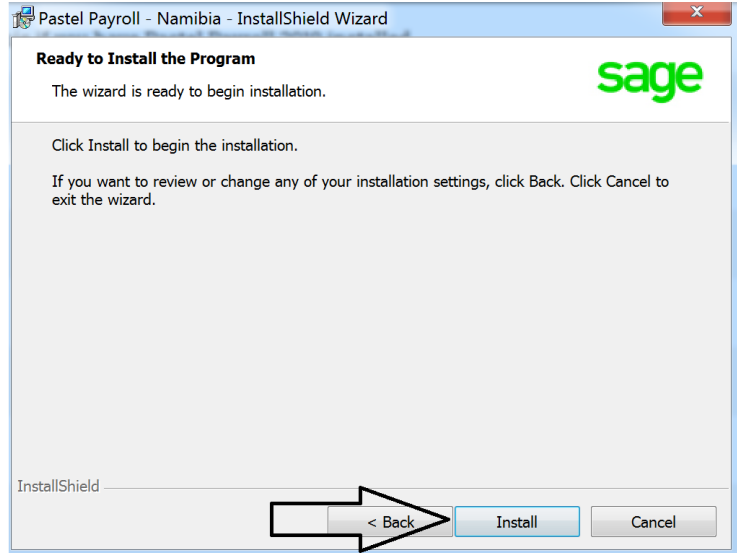
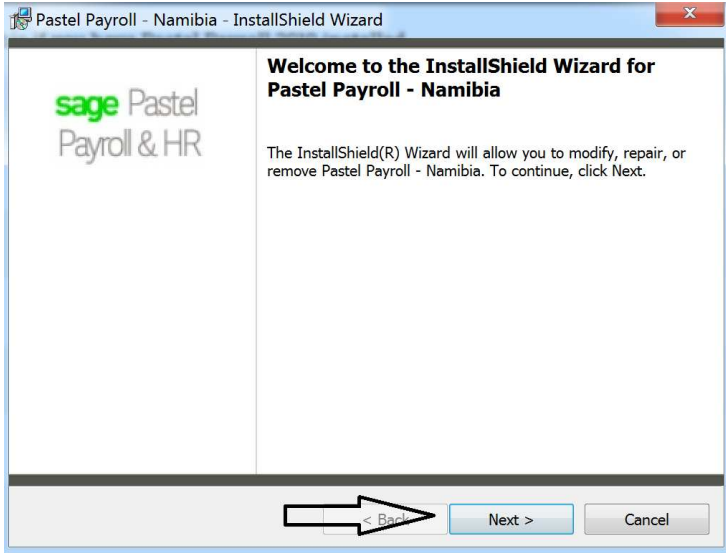
The following screen will appear

Choose Namibia and click on [DOWNLOAD](#)

Application Downloads			
Countries			
Sage Products			
Name	Description	Size	Actions
South Africa	Only install this if you have Pastel Payroll 2019 installed.	3.50 MB	DOWNLOAD
Angola	Angola	1.92 MB	DOWNLOAD
Botswana	Botswana	1.27 MB	DOWNLOAD
Ghana	Ghana	2.07 MB	DOWNLOAD
Kenya	Kenya	6.31 MB	DOWNLOAD
Lesotho	Lesotho	1.21 MB	DOWNLOAD
Malawi	Malawi	1.33 MB	DOWNLOAD
Malta	Malta	1.82 MB	DOWNLOAD
Mauritius	Mauritius	1.44 MB	DOWNLOAD
Mozambique	Mozambique	1.96 MB	DOWNLOAD
Namibia	Namibia	1.34 MB	DOWNLOAD
Nigeria	Nigeria	6.37 MB	DOWNLOAD

Namibia	Namibia	1.34 MB	DOWNLOAD
Nigeria	Nigeria	6.37 MB	DOWNLOAD

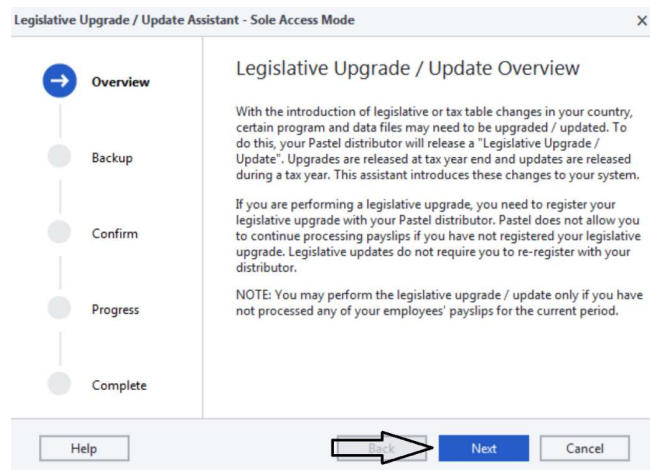

← click here - the below screen below will appear
Show all



Open Pastel Payroll

File Menu

Legislative release



Legislative Upgrade / Update Assistant - Sole Access Mode

Overview

Backup

Confirm

Progress

Complete

Backup

It is imperative that you make a backup of your company prior to processing the Legislative Upgrade / Update.

We suggest that you make at least two sets of backups and store one set at a different physical location than the computer. These backups should NOT be overridden.

This is VERY IMPORTANT as any interference or power failure can corrupt your data - corrupt data cannot be recovered!

If you would like to backup your company now, click the Backup button.

Click the Next button to continue with the assistant. 1.

2. **make a backup then click next**

Backup

Next

Back

Cancel

Help

Legislative Upgrade / Update Assistant - Sole Access Mode

Overview

Backup

Confirm

Progress

Complete

Confirm operation

Warning! The process you are about to initiate cannot be reversed. Please ensure that you have backups of your data as outlined earlier.

To leave this screen WITHOUT running the Legislative Upgrade / Update, click the Cancel button.

To PROCESS THE LEGISLATIVE UPGRADE / UPDATE, click the Process button.

Process

Back

Cancel

Help

Please click NO

Legislative Upgrade / Update Assistant - Sole Access Mode

Operation in progress

0%

Complete

Help

Back

Process

Cancel

Legislative Upgrade / Update Assistant - Sole Access Mode

This Legislative release contains necessary changes to the calculation totals on Pastel's transaction templates and transactions.

Select Yes to update all Pastel transactions and templates plus any transactions linked to Pastel Templates. This will affect the preset Pastel calculation totals except Actual Income, Retirement Funding Income and Non Retirement Income.

Select No to make no changes to your transactions calculation totals.

Yes

No

Please **Click OK**

